



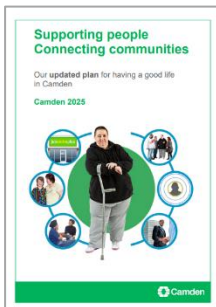
Big Plan 2025 - updates



1 Camden plans



Our main plan is now called **We Make Camden**



- there is also **Supporting People, Connecting Communities**



- and the **Health and Wellbeing Strategy 2022 to 2030**



Different health and care leaders work together to identify and improve health and social care in Camden



The **CLDS Promise** is still in place



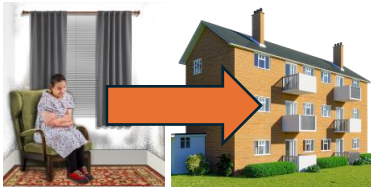
We want to be better at reviewing the Big Plan



2 Having a home that is right for me



The new **Camden All-Age Autism Strategy 2025 to 2030** focuses on housing



We looked at homes we have now and plan to replace homes in poor condition with better ones



4 new housing services opened with **20** new spaces - there is a plan for **1** more with **6** spaces



Shared Lives service is running well and now supports people with mental health needs



New Supported Living contracts started in **2020**



A new Strategic Accommodation Lead will look at housing, including private sector options



3 Finding and keeping a job



Learning Disabilities Job Hub is part of Good Work Camden - they often update us at Planning Together meetings



We have a Work Ready Coach and a Job Hub Advisor



Employment and training support is now provided by Good Work Camden



Good Work Camden has supported **38** people into jobs, training or volunteering



Employers have had training and been to events such as, a reverse jobs fair



Benefits advice sheets and cost of living support are available



All new contracts must add **social value** - things like jobs and training for people with disabilities



4 Feeling safe and connected



All health and social care staff must do Oliver McGowan training about LD and autism



All Council staff can do this training



Contact Camden staff have done Level 1 awareness training



Supported Living staff have had **Significant 7+** training - this helps care home staff notice when someone is getting ill



Greenwood is a safe place for people with disabilities, it runs

- The Club
- and **2** new social hubs



Greenwood gives information and advice through the CDA Advice Service



Community Support is delivered by Centre 404 and LDN - they help people join activities like cooking groups, a swimming group, coffee mornings and day trips



Supported Living providers run activities that build strong community networks in local venues like discos, arts and sports groups



The Living and Dying Group helps people talk about death, dying and making funeral plans



The Safeguarding Adults Partnership Board is still in place



5 Recognising different needs



Most Planning Together meetings are at Greenwood - a fully accessible building



Synergy speaks to lots of people with LD and groups - it now has over **50** members



There are new groups for the LGBTQ+ and Bengali communities



We have met our Annual Health Checks target for the last **2** years



CDA set up the Disability Advisory Group



CLDS HealthFest happens every year - over **200** people visit



6 Getting support and information



The NHS and Council must give information to people in a way they understand



Our Accessible Information Specialist develops easy read information and offers training, so others are skilled at this



We share information on

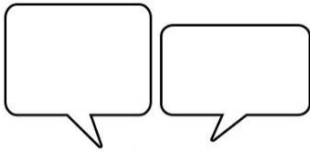
- Camden Care Choices
- cldsinfo.net
- rixwiki.org/camden



Greenwood continues to be a hub for people with disabilities and offers advice and information



New advocacy contracts started in **2022**



7 Having difficult conversations



Examples of work to support having difficult conversations include

- staff training on Talking Mats



- the Living and Dying Group supporting with funeral planning



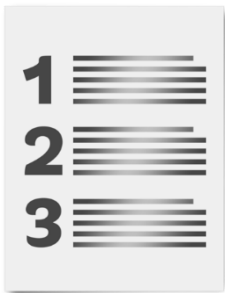
- Move It Move It helping with personal health goals



- Cancer Screening projects to increase uptake



- Sex and Relationships Group with talks about being LGBTQ+



8 What else do we need to do?



We were able to change who lives at some services to make single sex accommodation



To find out what people want from counselling, the psychology team came to a Planning Together meeting to collect feedback



The Joint Strategic Needs Assessment For Children and Young People with SEND was completed

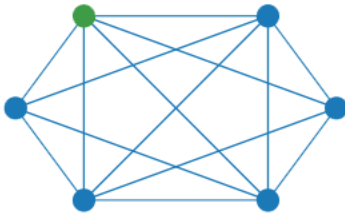


Review work experience opportunities



Improved partnership working between CLDS and CYPDS included

- Planning for Adulthood events
- Somali & Bengali marketplace events bringing services together
- and the new community support contract supports people from age **14**



We work closely with local services such as Camden Advice Network, libraries and local hospitals - this includes presentations and attendance at Planning Together meetings